

**Military Police Support to the Transportation Command,  
the Petroleum Group, the Ordnance Group,  
and the Special Ammunition Ordnance Brigade**

---

**MP support to the TRANSCOM, and to the TA's petroleum group, ordnance group, and special ammunition ordnance brigade is provided by special-purpose MP companies.** They provide dedicated security for the critical facilities and supplies operated or controlled by their supported unit. MP security companies support the TRANSCOM and the petroleum and ordnance groups. MP heavy security companies support the special ammunition ordnance brigade.

The TRANSCOM's terminal battalions control loading and storage of cargoes and supplies. The TA's petroleum group operates the theater's bulk petroleum distribution system, which extends from the rear edge of the COMMZ forward into the combat zone. The TA's special ammunition ordnance brigade stores, supplies, maintains, and controls the theater's nuclear ammunition. And the TA's ordnance group provides those same services for the theater's conventional ammunition. *For discussion of the services of the TRANSCOM, the petroleum group, the ordnance group, and the special ammunition ordnance brigade, see FM 55-10, FM 10-67, FM 9-6, and FM 9-84.*

Most special-purpose MP companies operate only in a maturing theater. They are organic to the TA's functional commands and units. They arrive in theater with their supported TA unit. These MP security companies include those organic to TRANSCOM terminal battalions to prevent pilferage and intentional mishandling of cargo. Included also are those assigned to the petroleum group to deny sabotage and pilferage attempts. And others are those assigned, when needed, to ordnance battalions to provide security at ASPS.

CONTENTS	
	Page
ORGANIZATION OF MP SECURITY COMPANIES .....	9-2
COMMAND AND CONTROL AND SUPPORT RELATIONSHIPS .....	9-2
EMPLOYMENT OF MP HEAVY SECURITY COMPANIES .....	9-3
EMPLOYMENT OF MP SECURITY COMPANIES .....	9-3

But some special-purpose MP companies are organic to units having sensitive security needs on a routine basis. MP heavy security companies are assigned to the special ammunition ordnance brigade to furnish security of special ammunition. Because of the sensitive nature of special ammunition, these MP companies provide security of this commodity in peacetime environments as well as in theaters of operation. Thus these MP units may be present in a developing as well as in a maturing theater. In wartime they provide dedicated security to the ammunition during its wartime storage at locations in the COMMZ and during its movement to other locations for wartime resupply.

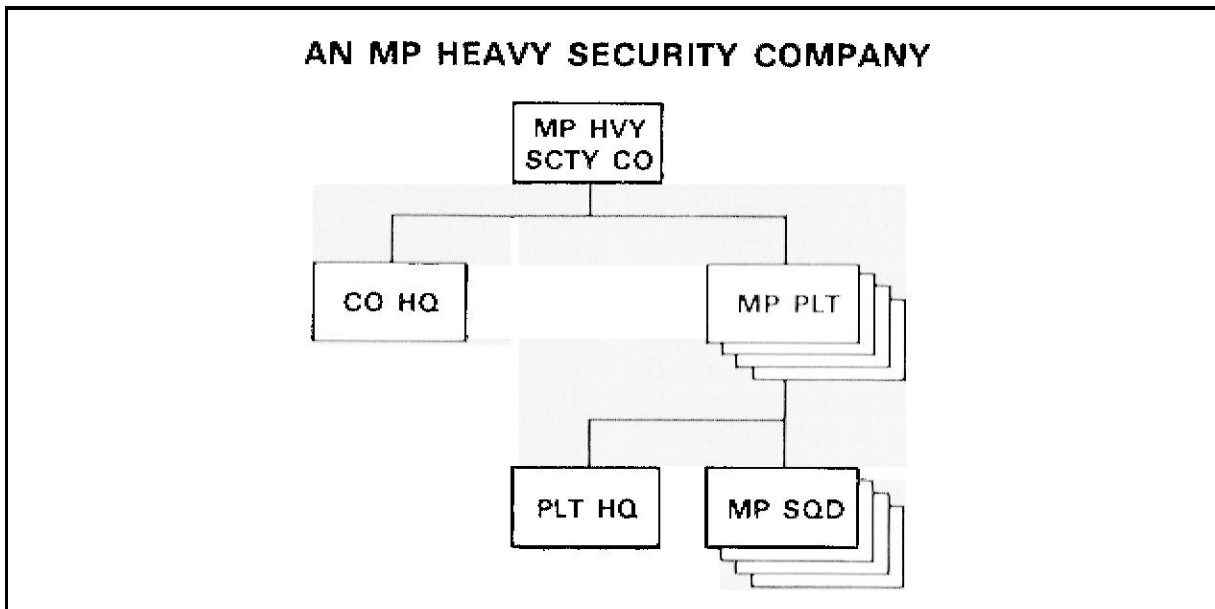
When the territory of a TA coincides with that of an HN, security of most critical facilities is provided by the HN. However, the HN might need and request US assistance. As the theater matures, the MP security companies arriving with TA units can help provide that assistance. If help were needed to provide security for critical pumping stations and transfer points, the need would be met by MP assigned to the petroleum group. If security of port, water-

way, and railway facilities in areas under US control could not be provided by the HN, MP assigned to the TRANSCOM could provide security for them. And security companies could be assigned to the TA's ordnance group to provide security of conventional ammunition. In a developing theater, however, where TAACOM MP assets may have to carry out some of these security responsibilities until TA units arrive, they would be done in accord with the TAACOM commander's priority of need for MP employment.

## ORGANIZATION OF MP SECURITY COMPANIES

The organization of special-purpose MP companies providing security is set by TOE. The companies are similar in that each kind of security company has a headquarters,

food service, maintenance, and supply section. And if security needs dictate, each company can be augmented by a patrol dog section.



However, the heavy security company and the security company differ in the number and size of the platoons and squads. The heavy security company is larger than its companion security company. The heavy security company has four platoons, each

having four 10-man squads. The security company has three platoons, each having three 12-man squads. The squads are uniform in size within each company. This allows squads to be tasked interchangeably to accomplish the company's security mission.

## COMMAND AND CONTROL AND SUPPORT RELATIONSHIPS

The command and control and support relationships are alike in both types of secu-

rity companies. The command and control extends downward from the commander of

the unit to which it is assigned. The MP company commander works for the commander of the supported unit. He advises the commander on matters pertaining to security. He commands the MP company and ensures his company accomplishes its mis-

sion. Each platoon leader directs and supervises his platoon's execution of its mission.

MP security companies provide general support for the units to which they are assigned.

## **EMPLOYMENT OF MP HEAVY SECURITY COMPANIES**

The security of special ammunition is provided by MP heavy security companies from its point of entry into the theater and during its movement to and storage in the weapons holding area. Heavy security companies also secure special ammunition during its subsequent movement to and storage at the corps NASPs and any movement forward to the user units in the division area and/or to division ammunition transfer points. Heavy security companies provide "security in depth." Early warning is provided by the establishment of OPs, LPs, sensors, MWDs, and both mounted and dismounted security

patrols. The security-in-depth concept is further developed by the establishment of a defensive perimeter. This perimeter consists of continuously manned fighting positions camouflaged to avoid detection and planned with overlapping fields of fire. If the supported unit routinely relocates, the MP can also expect to provide assets for quartering parties. These MP would provide route and area recon in transit. On arrival they would provide security for new NASP locations. They would also provide security during weapons transfers and perform as a reaction force when needed.

## **EMPLOYMENT OF MP SECURITY COMPANIES**

Because of the differences in security needs of the TA units an MP security company can support, there is no standard employment for an MP security company. The MP commander employs assets based on his mission orders. He receives his orders from the commander of the supported unit. He distributes assets and employs control measures based on the needs of the supported unit. He also considers METT-T and the type and size of the facility being secured or the geographical area over which it extends.

An MP security company commander can expect to locate his company headquarters near the headquarters of the supported unit. He can expect to locate each platoon headquarters where it can best direct the accomplishment of the mission. He can expect to employ his assets for perimeter defense and local security. MP security companies performing pipeline, port and harbor, or railway security can expect to share conventional security responsibilities with HN forces and other US forces.

**AN EXAMPLE OF MP SECURITY COMPANIES AND  
HEAVY SECURITY COMPANIES SUPPORTING TA FUNCTIONAL UNITS  
IS SHOWN ON THE FOLLOWING PAGE**

**MP UNITS SUPPORTING THE TRANSCOM, THE PETROLEUM GROUP, THE ORDNANCE GROUP, AND THE SPECIAL AMMUNITION ORDNANCE BRIGADE**

